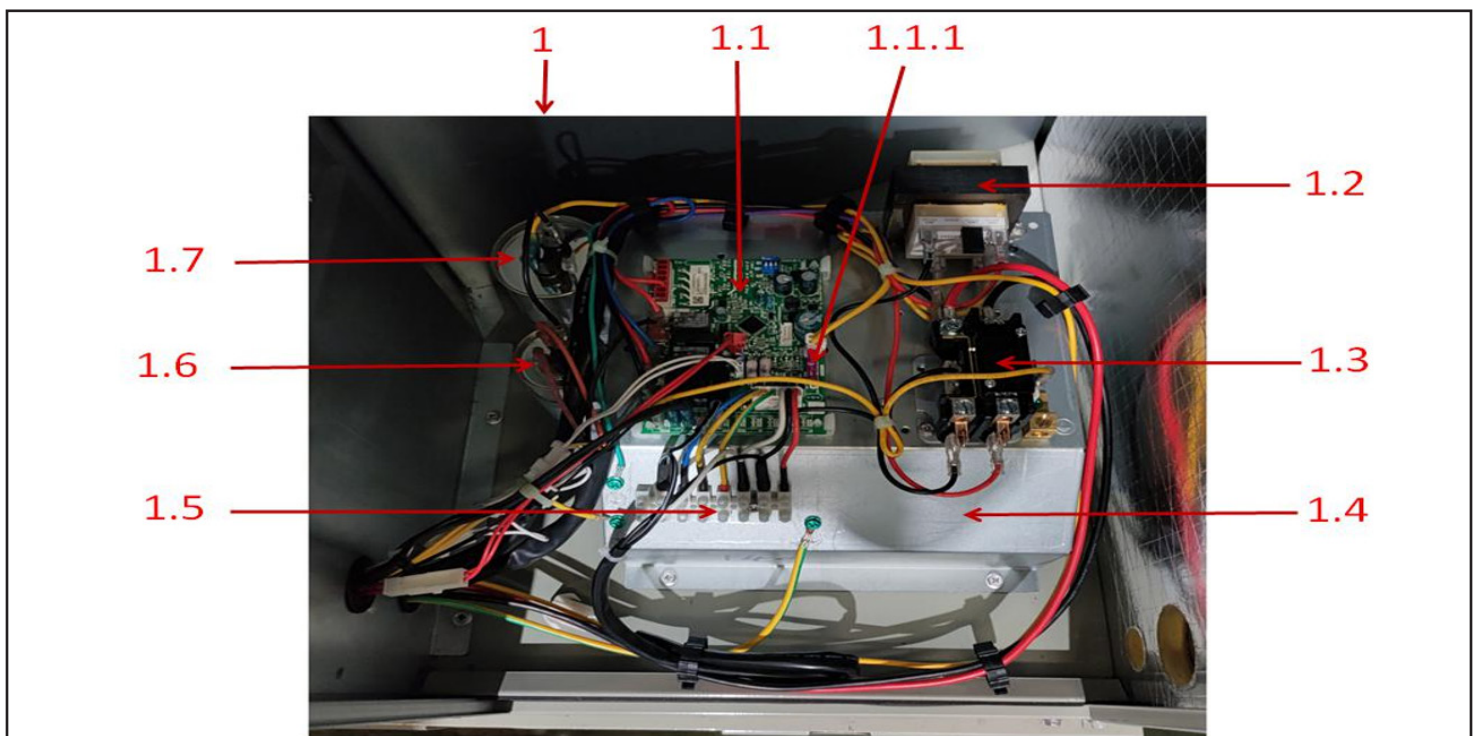
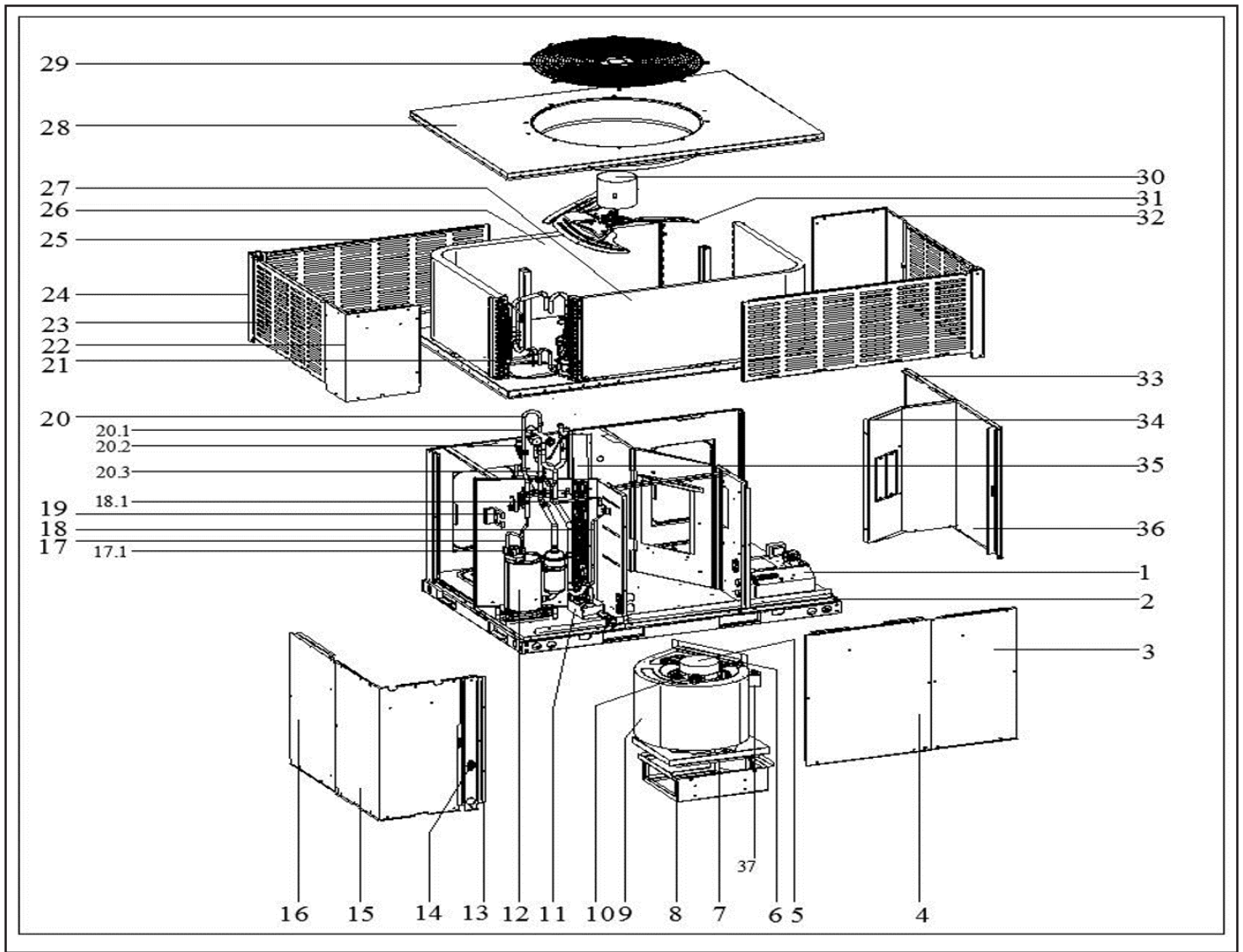

Comfort-Cire® **Century**®
SE Series

Heat Pump Packaged Unit

RHP2400S1A
Parts List



MARS®



Electric Gas Packaged Unit

RHP2400S1A Parts List

EX_ID	Spare Parts Code	Part Name(EN)	Qty.	Recommend store spare parts
1	17227700000961	E-part box assembly	1	
1.1	17127700000966	Main control board assembly	1	YES
1.1.1	11203001001353	Fuse	1	YES
1.2	11203103000194	Linear Transformer	1	YES
1.3	11203502000032	AC contactor	1	YES
1.4	12227700006629	Electrical appliance mounting plate assembly	1	
1.5	17400401000196	Wire joint, 8P	1	
1.6	17400103000152	Capacitor	1	
1.7	17400103000148	Capacitor	1	
2	12227700A07312	Chassis part	1	
3	12227700009001	Internal panel assembly	1	
4	12227700A07321	Internal panel assembly	1	
5	11002012000510	Single Phase Asynchronous Motor	1	YES
6	12223000001932	Supporter subassembly of fan motor	3	
7	12227700006519	Wind wheel fixed plate	1	
8	12227700006515	Fan support board	1	
9	12200102000175	Centrifugal fan	1	YES
10	12223000001992	Supporter of fan motor	1	
11	12127700000117	Drainage pan assembly	1	YES
12	11103010000677	Fixed Speed Rotary Compressor	1	YES
13	12227700009003	Column assembly	1	
14	11201007000025	Room Temperature Sensor	1	YES
15	12227700A07334	Panel	1	
16	12227700A07340	Internal panel assembly	1	
17	15427700001990	Air discharge pipe assembly	1	
17.1	17400513000066	Discharge temp sensor	1	YES
18	15427700002291	Throttle assembly	1	YES
18.1	15500210004409	Two-way throttle valve	1	YES
19	12227700008907	Installation board	1	YES
20	15427700002270	Four-way valve assembly	1	YES
20.1	15500216000084	4-way valve	1	YES
20.3	17400516000089	Pressure switch	1	YES
21	11201007000412	Pipe Temperature Sensor	1	YES
22	12227700A07331	Column assembly	1	
23	12227700A07329	Protective plate assembly	2	
24	12227700008914	Column	2	
25	12227700A07323	Protective plate assembly	2	
26	15827700000828	Condenser part	1	YES
27	15827700000752	Condenser part	1	YES
28	12227700A07342	Top cover welding assembly	1	
29	12927700000341	protection net	1	
30	11002012001568	Single Phase Asynchronous Motor	1	YES
31	12200104000033	Axial fan	1	YES
32	12227700A07350	Column	1	
33	12227700A07343	Internal panel assembly	1	
34	12227700006518	Circuit board assembly duct	1	
35	15827700001229	Evaporator assembly	1	YES
36	12227700009012	Column assembly	1	
37	17400103000145	Capacitor	1	

Due to ongoing product improvements, specifications and dimensions are subject to change and correction without notice or incurring obligations. Determining the application and suitability for use of any product is the responsibility of the installer. Additionally, the installer is responsible for verifying dimensional data on the actual product prior to beginning any installation preparations.

Incentive and rebate programs have precise requirements as to product performance and certification. All products meet applicable regulations in effect on date of manufacture; however, certifications are not necessarily granted for the life of a product. Therefore, it is the responsibility of the applicant to determine whether a specific model qualifies for these incentive/rebate programs.



1900 Wellworth Ave., Jackson, MI 49203 • Ph. 517-787-2100 • www.marsdelivers.com

